

Sensors

High-accuracy acoustic current, tide, and wave meters with vector-averaged current speed and direction

- Cost effective 2D point velocity meters for deep (**2ACM-7000**) or shallow (**2ACM-200**) water
- 3D meters for precise three-axis velocity measurements with internal compass and tilt correction for deep (**3ACM-7000**) or shallow (**3ACM-1000**) water
- Moored Profiler 3D acoustic current meter (**3ACM-SBP-MM**)
- High accuracy self-contained Tide Measurement System with options for real-time telemetry and solar charging (**TIDE SYSTEM**)
- 3D Wave Height & Direction Meter with built-in ACM; burst sampling and long-term averaging (**3D-Wave**)
- Economical, highly accurate and stable 1D Wave Height and Tide Measurement Sensor (**1D-WAVE**)



Tide System with optional solar charger



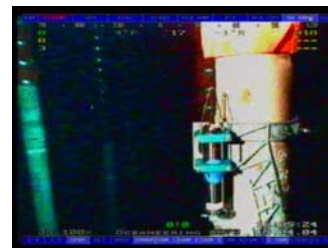
3D ACM with optional 5-ton frame

Current, Tide, and Wave Measurement Comparison Chart

	2D-ACM	3D-ACM	3D-Wave	1D Wave & Tide	Tide Recorder
2-dimensional velocity (x and y, N and E)	X	X	X		
3-dimensional velocity (x, y, z; N, E, up/down)		X	X		
Tide			X	X	X
Wave Height/Spectrum			X	X	X
Wave Direction			X		
Maximum Deployment (meters)	200, 7000	1000, 7000	23	23	20, 100
Conductivity	Optional	Optional	Optional	Optional	
Temperature	X	X	X	X	
Depth	Optional	Optional	X	Optional	X
External Inputs	2 Optional	2 Optional	2 Optional	2 Optional	

Underwater Structural Monitors

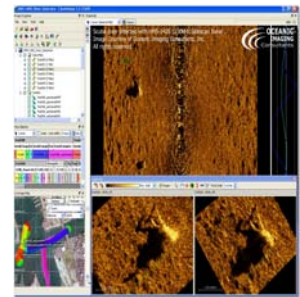
- Data logging and real-time remote acquisition of riser and pipeline displacements, structural stresses, and other analog data and control signals via bidirectional acoustic modem (**USS-110 and ADL-536**)



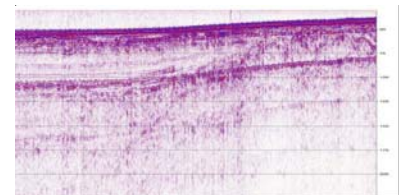
Systems

Acoustic Profiling, Surveying, Detection, and Underwater Vehicles

- **Solar powered Autonomous Underwater Vehicle** that can carry payloads and operate at depths up to 500 meters with integrated RF communication/control link (**SAUV II**)
- Deep-Water **Acoustic Positioning Beacons** for positioning at depths up to 6000m (**BAP-547**)



- **Portable Sidescan Sonar** System with true 16-bit processing for high resolution survey imaging or recovery operations (**HMS-1400**)
- **Portable Bubble Pulser** low-frequency acoustic profiler; superior penetration through difficult sediments (**HMS-620**)



HMS-620 provides over 125 meters of penetration through coarse sediments

Service

Transducer and Subsystem Manufacture and Test

- **Transducer Manufacturing and Calibration**
- **Pressure Test Services**
- **Potting and Molding**

